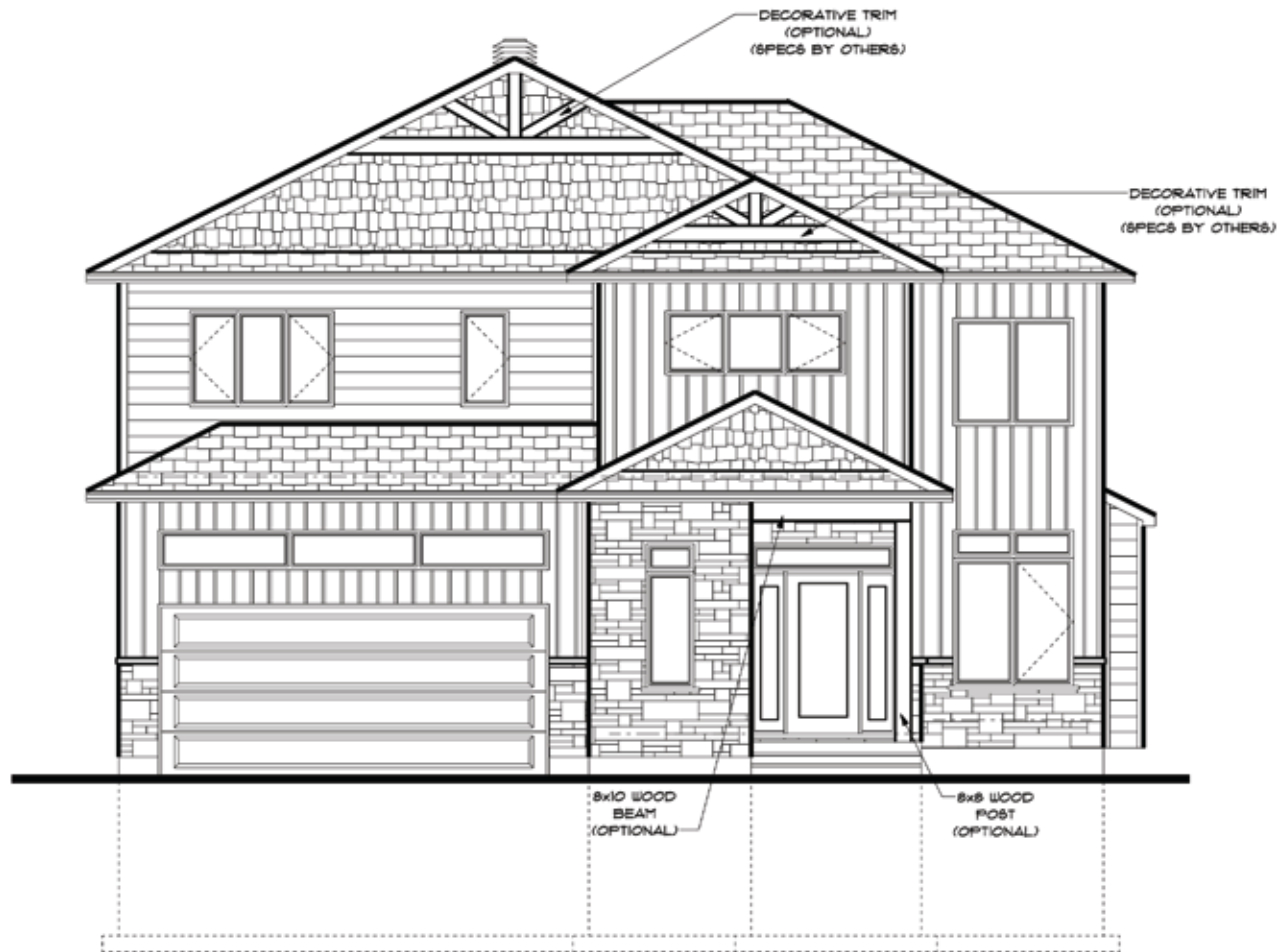




LES MAISONS  
BRUYÈRE  
HOMES

MONTEREY MODEL 4 BEDROOMS



FRONT ELEVATION -

**AREA:**

MAIN FLOOR: 1052 SQ.FT.

SECOND FLOOR: 1314 SQ.FT.

TOTAL: 2366 SQ.FT.

GARAGE: 432 SQ.FT.

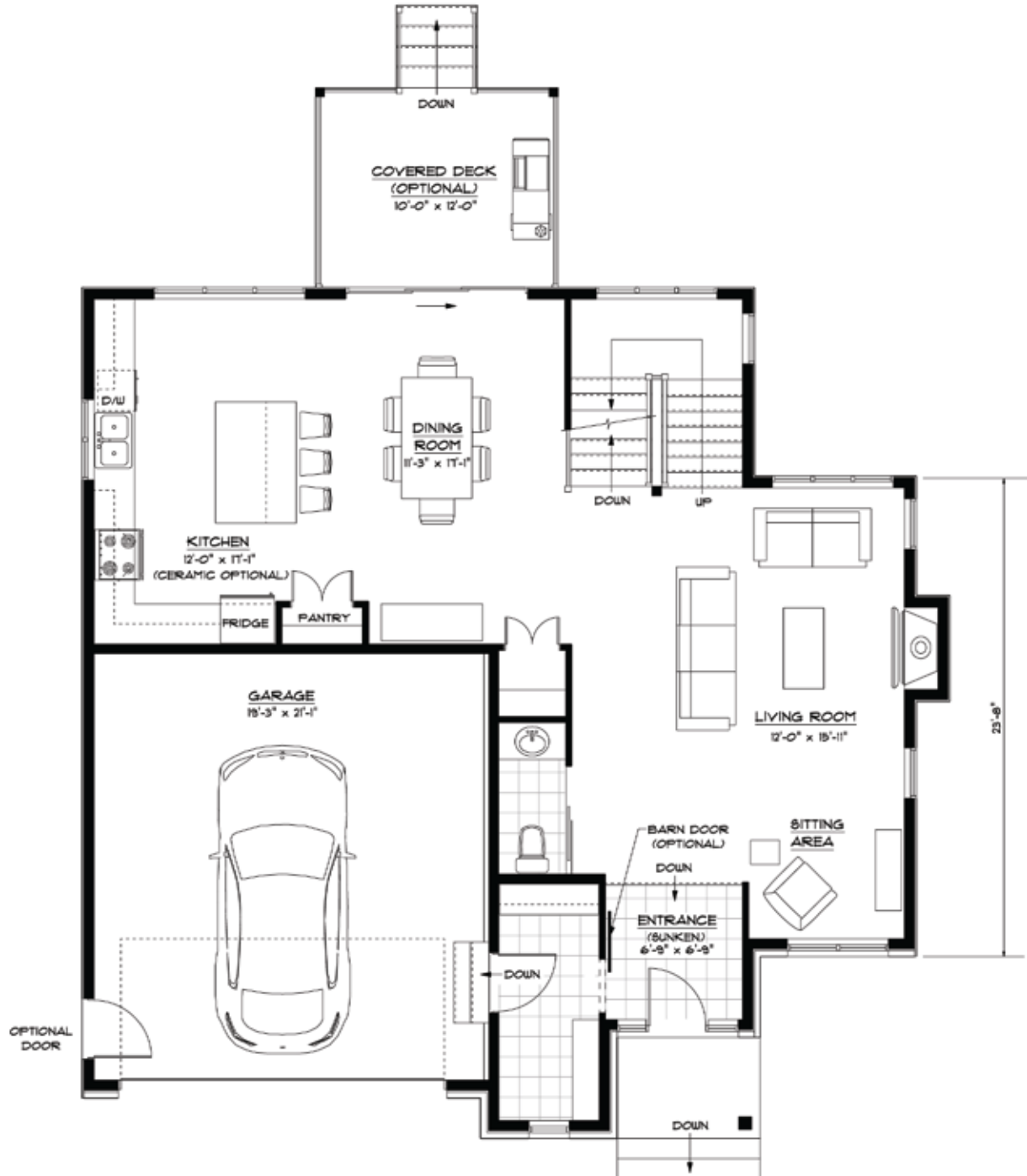
All illustrations are artist's concept. Materials, specifications and floor plans are subject to change without notice. All dimensions are approximate and may not be to scale. Actual usable floor space may vary from the stated floor area. Layout for kitchen, bathrooms & mechanical may vary from plan. Vertical and horizontal bulkheads, which are not shown on plan, may be required for structural, plumbing and heating runs.

Please consult our sales representative. FEBRUARY 2020  
Copyright 2020 MAISON BRUYERE HOMES



LES MAISONS  
BRUYÈRE  
HOMES

MONTEREY MODEL 4 BEDROOMS



MAIN FLOOR PLAN

All illustrations are artist's concept. Materials, specifications and floor plans are subject to change without notice. All dimensions are approximate and may not be to scale. Actual usable floor space may vary from the stated floor area. Layout for kitchen, bathrooms & mechanical may vary from plan. Vertical and horizontal bulkheads, which are not shown on plan, may be required for structural, plumbing and heating runs.

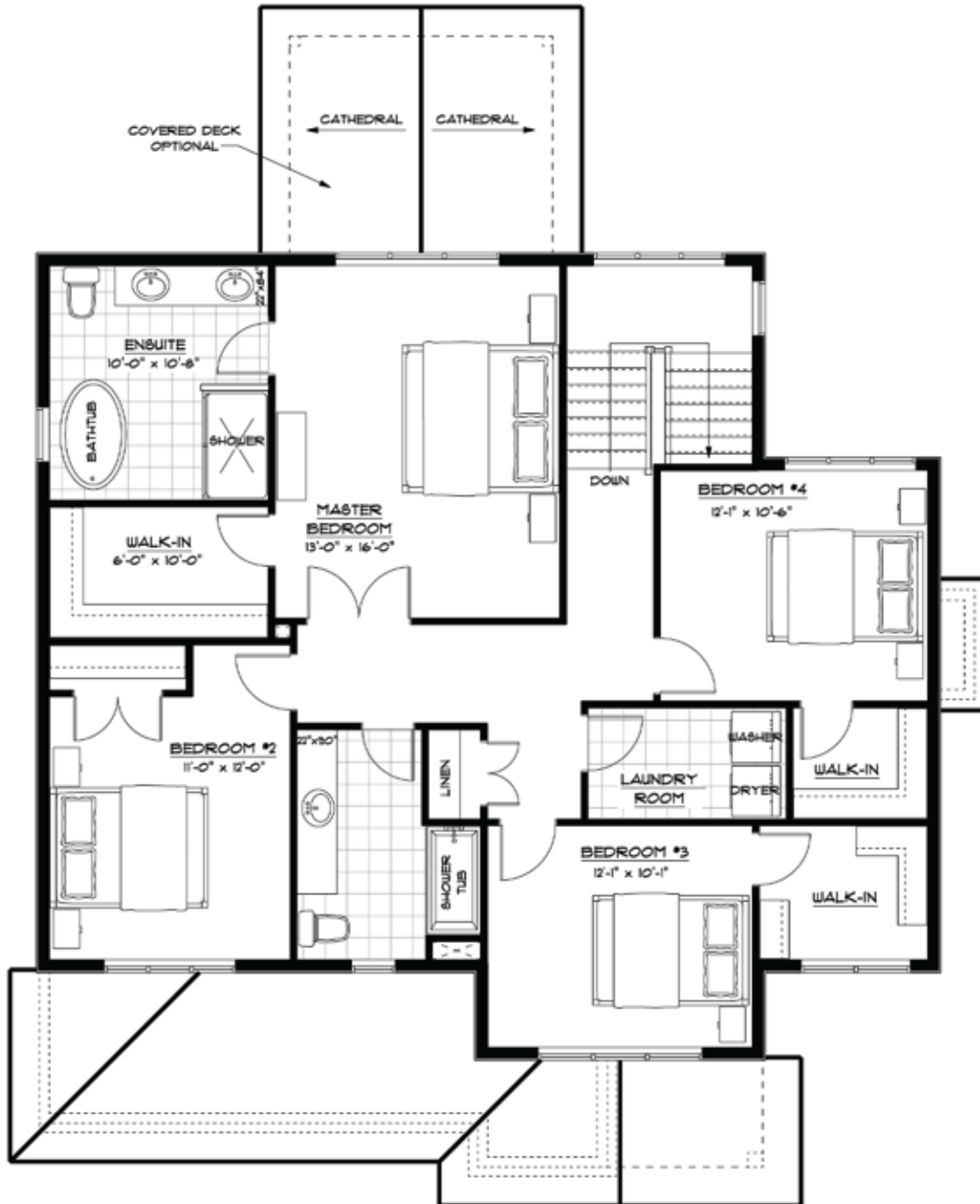
Please consult our sales representative. FEBRUARY 2020  
Copyright 2020 MAISON BRUYERE HOMES

<b>AREA:</b>
MAIN FLOOR: 1052 SQ.FT.
SECOND FLOOR: 1314 SQ.FT.
TOTAL: 2366 SQ.FT.
GARAGE: 432 SQ.FT.



LES MAISONS  
BRUYÈRE  
HOMES

MONTEREY MODEL 4 BEDROOMS



SECOND FLOOR PLAN - 4 BEDROOMS

All illustrations are artist's concept. Materials, specifications and floor plans are subject to change without notice. All dimensions are approximate and may not be to scale. Actual usable floor space may vary from the stated floor area. Layout for kitchen, bathrooms & mechanical may vary from plan. Vertical and horizontal bulkheads, which are not shown on plan, may be required for structural, plumbing and heating runs.

AREA:  
SECOND FLOOR: 1314 SQ.FT.