



## VŪ Eko

*"The name Eko is primarily a male name of Indonesian origin that means First Child."*

At VŪSaunas, we believe that wellness is about finding balance, connecting with nature and taking care of your mind, body and soul. We're proud to offer high-quality saunas that are designed to help you relax, detoxify, and improve your overall wellness.

This model totals 42sf with two tier benches suitable for 2 to 4 people overlooking the nature through the floor to ceiling glass window. This unit includes knotty western red cedar and OVM 1.5" 24G easy snap black metal panels metal exterior. The sauna heater unit included is made by Harvia.

Production timeline is 4-6 weeks. To place your order, we require a 50% deposit. The balance is due when it is complete and ready to be shipped. Delivery fee to be calculated upon ordering. The ground set-up, electrical connection and applicable permit are the customers' responsibilities. We also offer set-up assistance for a fee based on required machinery and distance. Financing is available.

See below for specs sheet and pricing.

---

## 01 GENERAL

---

Plans, shop drawings, selections, shop requirements & office coordination

---

## 02 EXTERIOR FINISHES

---

OVM 1.5" 24G Easy Snap Black Metal panels & Black capping's

---

## 03 METALS

---

Metal Accessories required – 4 hooks and door handle

---

## 04 STRUCTURAL WOOD | LABOUR

---

Wood required to build sauna structure

All labour required to build the VŪ EkO model

---

## 05 INSULATION | MEMBRANES

---

Floor, walls and roof insulation materials

Heat Reflective membrane inside the unit

Water & moisture membranes at floor and roof assemblies

---

## 06 WINDOWS

---

10mm Tempered Glass and accessories

---

## 07 INTERIOR FINISHES

---

1x4 STK WR Cedar T&G (5/8" x 3" face) – Floor, walls and ceiling

1x2 WR Cedar bench surfaces on 2x4 WR Cedar bench frame

---

---

## 08 HEATER

---

HARVIA KIP 60B BLACK (*breaker size as per manufacturer specifications*)

HARVIA SAUNA STONES

HARVIA BLACK SAUNA PRODUCT SET

*Bucket / Ladle / Thermo/hygrometer*

---

## 09 ELECTRICAL & VENTILATION

---

Electrical wiring, set up heater and components

2 Exterior light fixtures (*VŪSaunas Standards*)

Interior LED strip lighting (*VŪSaunas Standards*)

Ventilation of Sauna Unit (*VŪSaunas Standards*)

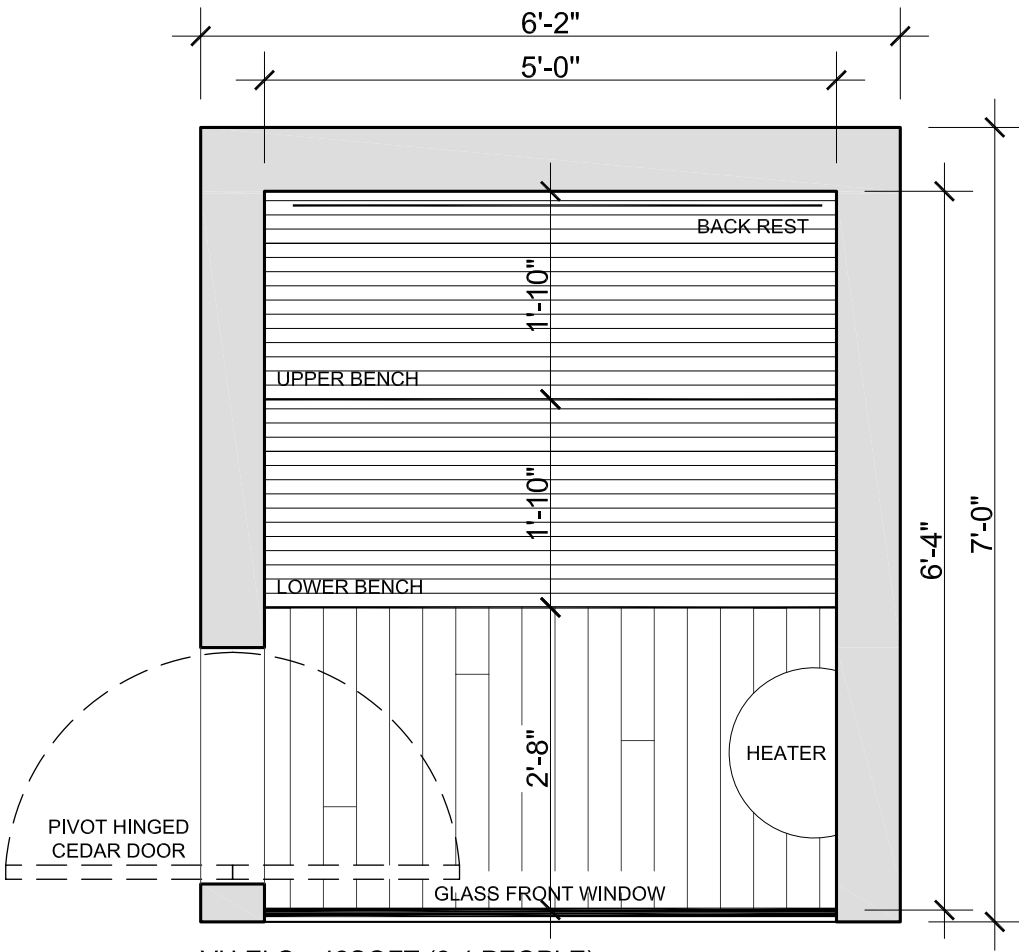
---

**TOTAL PRICE - (*Plus HST*)**

**\$24,449.00**

---

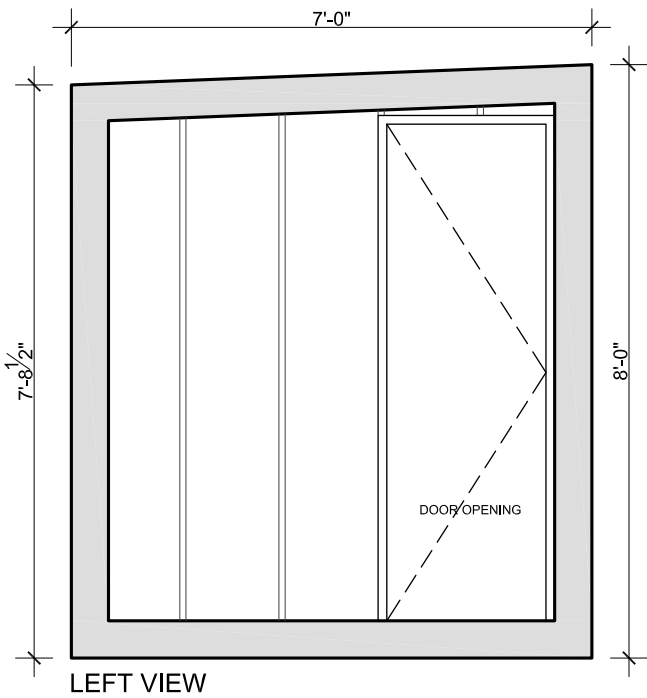
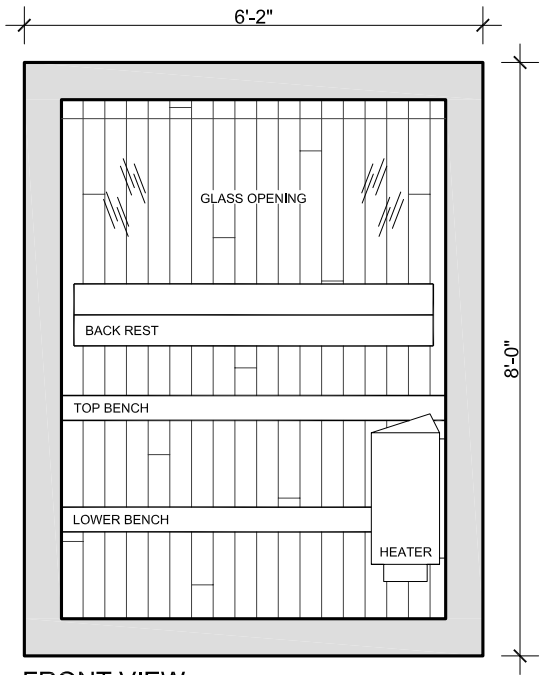
FLOOR PLAN



VU Eko - 42SQFT (2-4 PEOPLE)

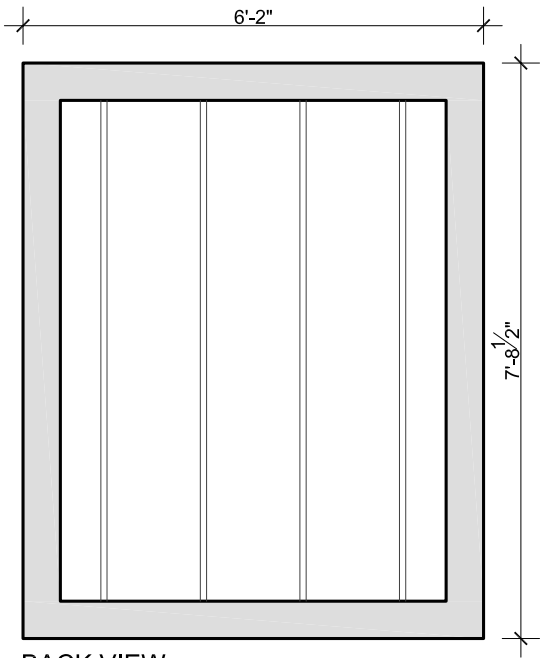
DIMENSIONS SHOWN ARE SUBJECT TO CHANGE DURING ASSEMBLY.  
USE AS REFERENCE ONLY.

ELEVATIONS

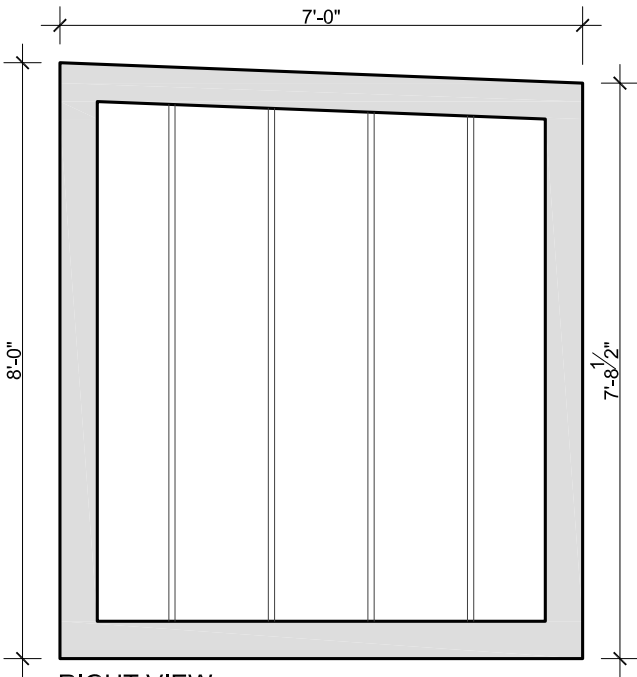


DIMENSIONS SHOWN ARE SUBJECT TO CHANGE DURING ASSEMBLY.  
USE AS REFERENCE ONLY.

ELEVATIONS



BACK VIEW



RIGHT VIEW

DIMENSIONS SHOWN ARE SUBJECT TO CHANGE DURING ASSEMBLY.  
USE AS REFERENCE ONLY.

### HARVIA KIP 60B BLACK



### HARVIA BLACK SAUNA PRODUCT SET



*Additional upgrades available, ask your VŮSaunas representative.*